



## WHY PARTNER WITH US

### Benefits to you

#### A SERVICE OFFERING BASED ON EXPERIENCE

NSrepair is a spin-off from the biopharmaceutical company Pharmaxon which discovered and developed a new class of therapeutic compounds for the treatment of acute nervous system traumas. **This experience allowed us to identify key elements and critical steps required to optimize and ensure the smooth progression of your preclinical programs.**

Our exclusive partnership with a leading European center in neuroscience research guarantees you the best animal models and most efficient services.

#### A CLOSE CUSTOMER RELATIONSHIP

Our experts are dedicated towards establishing close relationships with our partners in order to ensure that specific milestones are reached according to specific timelines. Team members are trained to understand your needs and to respond proactively with adapted solutions.

#### STAFF AND ANIMAL FACILITY MEETING THE MOST DEMANDING REQUIREMENTS

Our animal facility is operated by highly skilled animal technicians, and supervised by a veterinarian and an ethologist. All our experiments are conducted in a surgical unit using the latest cutting edge technology.

Our state-of-the-art housing equipments meet the current ethical and regulatory European requirements. All of our procedures are supervised by an ethics committee for human and animal research.



Partner in preclinical drug development  
for acute neurological injuries



**Please feel free to contact NSrepair  
for further information**

e-mail: [contact@nsrepair.com](mailto:contact@nsrepair.com)

Phone: +33(0)4 91

Fax: +33(0)4 91

INT, 27 Bd Jean Moulin  
13385 Marseille - Cedex 05  
FRANCE

Or visit our website for detailed information  
on our models and services

[www.nsrepair.com](http://www.nsrepair.com)

Anticipate **clinical trials**  
from **preclinical phase**



**EXPERTISE  
QUALIFICATION  
EXPERIENCE**

**RESPONSIVENESS  
FLEXIBILITY  
RESOURCEFULNESS**

**HIGH ETHICAL &  
WORKING  
STANDARDS**





A CRO HIGHLY SPECIALIZED IN ACUTE NEUROLOGICAL INJURIES

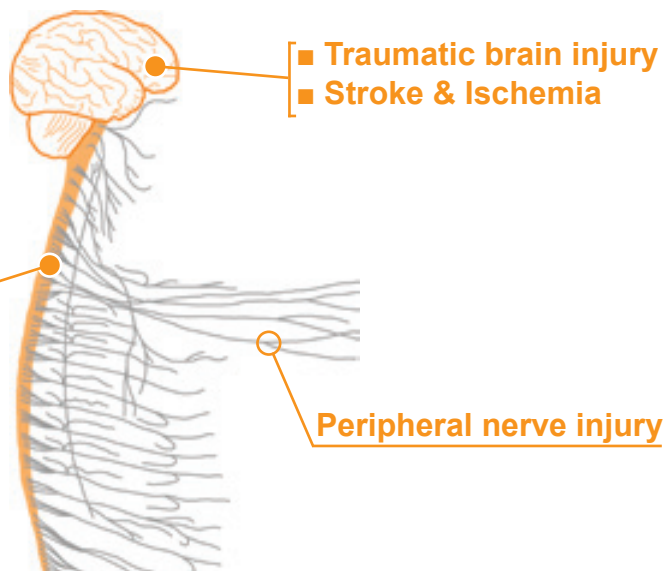
ENSURE THE SUCCESS OF YOUR PRECLINICAL PROGRAMS



TRUST IN OUR WELL-COORDINATED TEAM OF EXPERTS



NSrepair offer you their expertise in modeling:



and in the study of associated symptoms:

- Loss of movement & sensation
- Neuropathic pain
- Spasticity
- Loss of bladder control
- Cognitive & mnesic deficits



We offer our unique biopharmaceutical know-how in a range of tailored services

CONSULTING SERVICES

Design of preclinical plans, including physicians consultation

PRECLINICAL STUDIES

Animal models to characterize the:

- Efficacy
- Functional neurotoxicity
- Pharmacokinetics

TRAINING PROGRAM

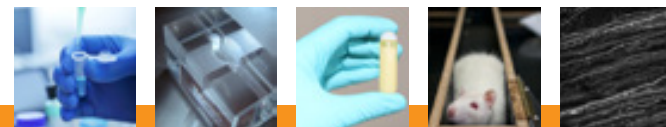
Master the best techniques in:

- Neurosurgery
- Functional outcome evaluation

Choose either a complete preclinical package or from the list of services on a punctual basis.

Our animal surgeons can also be seconded to your animal facility to:

- work as part of your team
- develop new animal models
- solve problems on site



Flexible solutions that meet each of your needs

For further information: [www.nsrepair/anitp](http://www.nsrepair/anitp)

Each stage is handled by the required specialists

**Animal surgeons**

**Reduce the duration of experiments**  
Our highly skilled surgeons are trained to perform a large number of surgeries per day.

**Physicians**

**Anticipate early-on your clinical trials**  
The way in which the drug will be used in human is taken into account in the design of our preclinical plans and experiments.

Your project is our project

**Improve the success rate of your preclinical programs**

**Expert global advice**

**We assist you in your go/no-go decisions.** Our study results are reviewed by a team of academic researchers, physicians and a preclinical advisor.

**Veterinarian**

**Animal ethics forms the heart of our concerns over animal use and treatment**  
A veterinarian oversees all procedures and monitors the welfare of all animals to minimize animal loss and suffering.